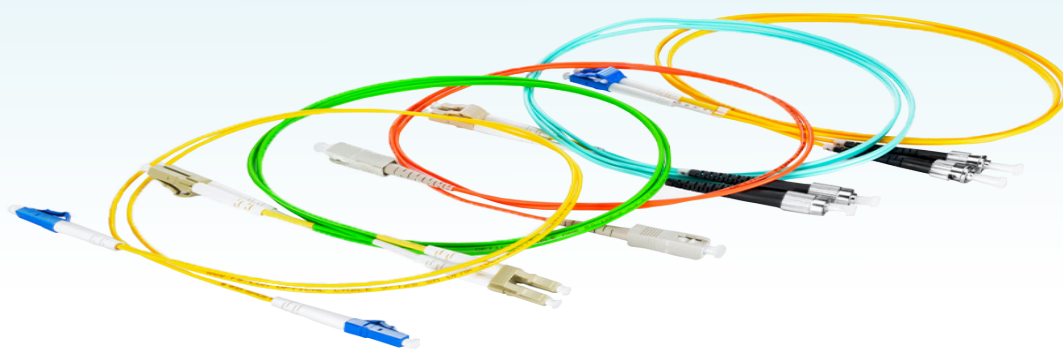


# Standard Fiber Patch Cables Datasheet

## MAKE HIGH-SPEED ETHERNET NETWORK EQUIPMENT CONNECTIONS

Designed for data center, enterprise, FTTx, LAN and WAN, CATV network, telecom network applications etc. requiring quick infrastructure deployment such as main, horizontal, and zone distribution areas.



### Standard Fiber Patch

Fiber optic patch cables are ideal for supporting high speed telecommunication network fiber applications. They are manufactured and tested in compliance with TIA 604 (FOCIS), IEC 61754 and YD/T industry standards. OM1, OM2, OM3, OM4, OM5 or OS2 fiber types are available to meet the demand of Gigabit Ethernet, 10 Gigabit Ethernet and high speed Fiber Channel. Every termination is through rigorous parameter test to ensure the highest network performance.

### Standard Fiber Patch

- RoHS, ISO 9001 Compliant • TIA 604 (FOCIS)
- TIA/EIA 492AAAE
- IEC 61754
- IEC 60793-2-10
- IEC 61300-3-35
- YD/T1272.1-2003

### Features

- » High quality zirconia ferrules.
- » Good repeatability and interchangeability.
- » LC, SC, ST, FC, LSH, MTRJ, MU connectors are available.
- » Flame-retardant, rugged and durable jacket.
- » Printing helps clarify and recognize different cables.
- » OS2, OM4, OM3, OM2, OM1, OM5 are available.
- » Factory terminated and tested for insertion loss, return loss and end face.

## FIBER OPTIC PATCH CORDS - TECHNICAL SPECIFICATION

Physical Characteristics	Description
Connector Types End A	LC/SC/ST/FC/LSH/MU/MTRJ
Connector Types End B	LC/SC/ST/FC/LSH/MU/MTRJ
Polish Type	SMF: UPC-UPC; UPC-APC; APC-UPC; APC-APC; MMF: UPC-UPC
Connector Ferrule	Zirconia Ceramic
Cable Outside Diameter	Duplex: 2.0/3.0mm, Simplex: 0.9/2.0/3.0mm
Interchangeability	≤0.2dB
Vibration	≤0.2dB
Minimum Bend Radius	SMF: 10mm; MMF: 7.5mm/15mm

Mechanical Characteristics	Description
Fiber Type	OS1/OS2/OM5/OM4/OM3/OM2/OM1
Fiber Count	Duplex /Simplex
Cable Jacket	PVC (Riser/OFNR)/LSZH/Plenum (OFNP)
Jacket Color	OM1/OM2: Orange; OM3/OM4: Aqua; OM5: Lime Green; OS2: Yellow
Fiber Grade	SMF: G.657.A1; OM5/OM4/OM3/OM2: Bend Insensitive; OM1: G.651

Optical Characteristics	Description
Connector Insertion Loss	LC/SC/ST/FC/LSH/MU/MTRJ≤0.3dB
Connector Return Loss	MF: UPC≥50, APC≥60 (LC/SC/ST/FC/MU/MTRJ), UPC≥55, APC≥75 (LSH) MMF: UPC≥30 (LC/SC/ST/FC/LSH/MU), UPC≥35 (MTRJ)
Attenuation at 1310nm	0.36dB/km
Attenuation at 1550nm	0.22dB/km
Attenuation at 850nm	3.0dB/km
Attenuation at 1300nm	1.0dB/km

Environmental Characteristics	Description
Operating Temperature	-20~70°C
Storage Temperature	-40~80°C